

# MATRIX

S O F T W A R E

## INSTALLATION GUIDE

### STRUCTURAL ANALYSIS SOFTWARE

- ✓ MatrixFrame®
- ✓ MatrixFrame® Toolbox
- ✓ MatrixGeo®

## SYSTEM REQUIREMENTS

- ✓ Workstation with a Pentium 4 processor or minimal equal
- ✓ Display resolution 1024x768 (XGA)
- ✓ Windows XP (32 and 64 bit), Windows Vista (32 and 64 bit), or Windows 7 (32 and 64 bit)
- ✓ 2 Gb internal memory for all parts, Except
- ✓ 4 Gb for the 3D Frame, FEM Walls and FEM Plates
- ✓ 1 Gb free disc space
- ✓ CD-ROM player
- ✓ 1x LPT or USB port (for hardware key) or Internet (for software key)

## INDEX

### SINGLE USER LICENSE

INSTALL ANALYSIS SOFTWARE.....	3
REGISTRATION SOFTWARE LICENSE.....	4
REGISTRATION HARDWARE LICENSE.....	4
UPDATE SOFTWARE LICENSE .....	5
UPDATE HARDWARE LICENSE .....	5

### NETWORK USER LICENSE

INSTALL DRIVER ON SERVER (SOFTWARE LICENSE) .....	6
INSTALL DRIVER ON SERVER (HARDWARE LICENSE) .....	6
INSTALL ANALYSIS SOFTWARE.....	7
REGISTRATION HARDWARE LICENSE.....	8
UPDATE SOFTWARE LICENSE .....	9
UPDATE HARDWARE LICENSE .....	9

## INSTALL ANALYSIS SOFTWARE

### **Note**

Make sure you are logged on as **administrator** of the computer when you install the software. If necessary, contact your system administrator.

### **Note**

If you have a network key, read the installation guide for using a network key. Go to page 6 of this guide.

Perform the following steps to successfully install the software on your computer:

1. Are you in possession of a hardware key (USB) from Matrix, remove them first before proceeding with installing analysis software on your PC.
2. Insert the CD into the CD-ROM. When it is closed, the installation procedure starts automatically. If not, start the installation procedure manually: click **Start, Run**. Browse the tree to your CD-ROM reader and locate the file **setup.exe** on the CDROM in the directory software. Select it and click **Open** and **OK**.
3. Choose a language.
4. The installation procedure begins with a welcome screen. The installation is now being prepared. This may take some time. Click **Next** to move to the next screen.
5. **License**, read the license agreement carefully. Make a right choice. If you do not agree, the installation stops. Do you agree then click **Next** to move to the next screen.
6. **Client data**; check your data, Click **Next**.
7. **Type installation**, when you are in possession of a local key you can select the **Typical** installation. The following programs are installed: MatrixFrame, MatrixFrame Toolbox and MatrixGeo. If you are in possession of a network key or want to differ from default installation, choose **Custom**. Then click **Next**.
8. The installation can now be started. Click **Install**.

### **Note**

The installation procedure can be aborted at any time by clicking **Cancel**.

9. The software is now **successfully installed** on your computer.

### **Note**

When starting, the software will automatically check your valid key or activation. If it appears that the key is not the latest or the license or has expired, you will first need to read the newer license. See next page.

If you are in possession of a **hardware key** and this **is expired** or has to be activated, follow the procedure on the next page.

If you are in possession of a **hardware key** and it is **up-to-date**, connect it to your workstation and your programs are ready for use.

If you are in possession a **software key** and there is no activated earlier version for this kind of software from Matrix software on your system, follow the procedure on the next page.

If you are in possession a **software key** and there is an older version of the accounting software activated by Matrix Software on your computer, then the new version is ready for use.

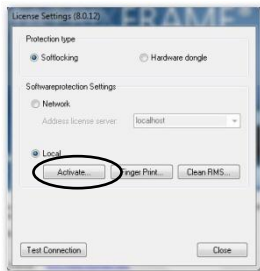
## REGISTRATION SOFTWARE LICENSE

Before you can register the software, your PC must be connected to the Internet. Only during the activation of your license your workstation needs an Internet connection.

1. Start MatrixFrame, Toolbox or MatrixGeo. Without proper registration, the program will start with the screen:



2. Choose in the dialog for **Settings**
3. Choose from the resulting dialog **Software and Local**



4. Click the button **Activate**
5. From the resulting dialog enter the code that you received via email or post and then click the button **Activate**.
6. At that point, your computer connects to the Internet with the Matrix Server, and it will recognize your license.
7. A screen will appear that your key is **successfully activated**.
8. Click **OK** and you are ready with registration and you can work.

### Activation Error?

Set your firewall so that security can be established via the activation protocol: 5094 to the URL: [activation.matrix-software.nl](http://activation.matrix-software.nl)

### Hardware Change

If one of the hardware components are changed then the Matrix application could no longer starts. You should then contact the Support division of Matrix Software

### New Installation of Operating System

If the operating system is reinstalled and the system gets the same computer name, then the original registration code can be used to reactivate.

## REGISTRATION HARDWARE LICENSE

Before you can register the software, you need to confirm that the LPT or USB hardware key is operational at your workstation.

1. Start MatrixFrame, MatrixTools or MatrixGeo. Without proper registration, the program will start with the screen;

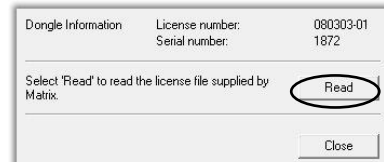


Choose for Settings



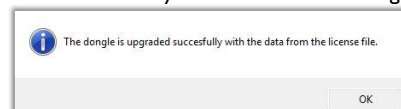
Choose for "Hardware dongle" and "Local" and click on button **Close**.

2. If you click **Upgrade** you will see the screen below;



3. Click **Read**.
4. The computer will ask you to enter a disk. By clicking **Cancel** you get to a window where you can browse to the folder where the license files that you received via email, has stored.
5. Select the license file by clicking and then click **Open**.

6. Your registration for the software will now be read. If this is successful you will receive the message



7. Click **OK**.
8. Then click **OK** in the boot screen (see point 1).
9. The program is now ready for operate with your new license.

## UPDATE SOFTWARE LICENSE

Have you purchased new modules, you will receive a new registration code via email.

### **Note**

During activation, your PC needs a connecting with the Internet. Normally one time a year

### Through MatrixFrame

1. **Start** Matrix Frame Toolbox.
2. After selecting project type, click on tab **Customise** and select **License info**
3. Click the following dialogue **Activation**;  
If **activate** button is not present, (only update button), press choose **Settings**. In that dialog set protection on software and local.  
Click **Activate**.
4. **Enter / Paste the code** you received by email.
5. The computer will now connect through Internet with the license server by Matrix Software
6. You will be **notified** if this is successful. Click **OK** and **Close**
7. The program is now ready for use.

### Through MatrixFrame Toolbox / MatrixTools

1. Start **MatrixFrame Toolbox / MatrixTools**
2. Go to pulldownmenu **Help** and choose **About Toolbox**.
3. Choose for **License**
4. From here continue on point 4 of update through **MatrixFrame** (above on this page)

### Through MatrixGEO

1. Start **MatrixGEO**
2. Go to pulldownmenu **Bestanden** and choose **Update Licentie Sleutel**
3. From here continue on point 4 of update through **MatrixFrame** (above on this page)

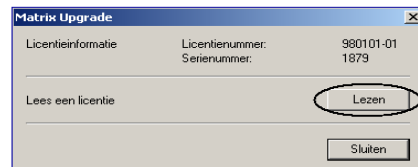
## UPDATE HARDWARE LICENSE

When new modules purchased, you receive a new registration code will be sent via email. Deze dient u eerst ergens op de harde schijf van computer op te slaan. This is your first time somewhere on the hard disk of your computer to save.

### Through MatrixFrame

1. **Start** Matrix Frame
2. After selecting project type, click on tab **Customise** and click on **License info**
3. Click the following dialogue **Upgrade**;  
If **upgrade** button is not present, (only activate button), press choose **Settings**. In that dialog set protection on Hardware dongle and local.  
Click **Upgrade**.

4. If you click **Upgrade**, the following dialog appears



5. Click **Read**
6. The computer will ask you to enter a disk. By clicking **Cancel** you get to a window where you can browse to the folder where the license files that you received via email, saved
7. **Select** the license file by clicking and then click **Open**
8. Your registration for the software will now be read. If this is successful you will receive a **message**
9. Click **OK** and **Close**
10. The program is now ready for use.

### Through MatrixFrame Toolbox / MatrixTools

1. Start **MatrixFrame Toolbox / MatrixTools**
2. Go to pulldownmenu **Help** and choose **About Toolbox**.
3. Choose for **License**
4. From here continue on point 4 of update through **MatrixFrame** (above on this page)

### Through MatrixGEO

1. Start **MatrixGEO**
2. Go to pulldownmenu **Bestanden** and choose **Update Licentie Sleutel**
3. From here continue on point 4 of update through **MatrixFrame** (above on this page)

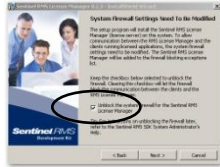
## INSTALL DRIVER ON SERVER (SOFTWARE LICENSE)

1. Install the **Sentinel RMS License Manager installer** on a server in the network. (Separate installation)  
(From CD or downloadable from the website:  
<http://www.matrix-software.com/nl/service/downloads/> )

1. Select complete setup



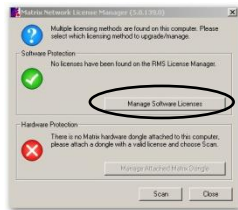
2. Select automatic protection



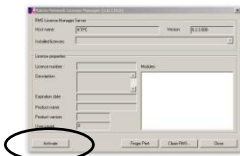
3. Select for Next and Finish

2. You received a registration key via email. You can copy this key and paste it in the activation window (see step 4).
3. Put your security so that activation can take place through:  
protocol: 5094  
Activation URL: activation.matrix-software.nl
4. Activate the license on the server through the **Matrix Network License Manager Utility**  
(From CD or downloadable from the website:  
<http://www.matrix-software.com/nl/service/downloads/> )

1. Click Manage Software License



2. Click Activate



3. Fill in the code and choose Activate
4. You get a message that the code is activated

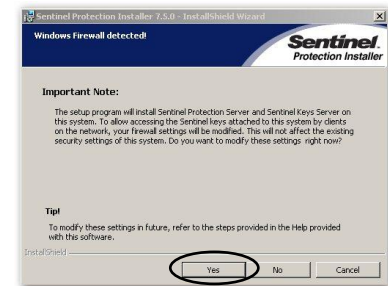
## INSTALL DRIVER ON SERVER (HARDWARE LICENSE)

1. Install the **Sentinel Protection Installer (Networking)** on a server in the network.  
(From CD or downloadable from the website:  
<http://www.matrix-software.com/nl/service/downloads/> )

1. Choose complete installation



2. Choose Yes



3. Continue the installation until it's finished.

2. Insert the hardware key (USB / LPT) on the server
3. From a web browser on a client in the network, the key must be reachable when you start a web browser and put in the address bar the IP number with 7002 protocol.
4. If the key is properly installed the client's web browser loaded to a page with information concerning the key.

## INSTALL ANALYSIS SOFTWARE

### **Note**

Make sure you are logged on as **administrator** of the computer when you install the software. If necessary, contact your system administrator.

### **Note**

If you have a network key you have to install first the driversoftware on the server. Go to page 6 of this document,

Perform the following steps to successfully install the software on your computer:

1. Are in possession of a Hardware Key (USB / LPT) from Matrix, remove them first before proceeding with installing accounting software on your PC.
2. Insert the CD into the CD-ROM. When it is closed, the installation procedure automatically.

### **Note**

If not, start the installation process manually: click **Start, Explorer**. Browse the tree to your CD-ROM reader and locate the file **setup.exe** on the CDROM in the directory software. Select it and click **Open** and **OK**.

3. Choose a **language**.
4. The installation procedure begins with a welcome screen. The installation is now being prepared. This may take some time. Click **Next** to move to the next screen.
5. **Read** the license agreement carefully. Make a right choice. If you do not agree, the installation stops. Do you agree then click **Next** to move to the next screen.
6. **Client data**; check your data, Click **Next**.
7. **Installation type**, select **Custom**. Then click **Next**.

Through custom installation can determine which applications will and will not need to be installed and in which folder the software must be installed;

**By default**, the software installed in:

C: \Program Files\Matrix\

Click **Change** if you want the software in a different folder on your computer to install. After selecting the correct folder click **Next** to continue the installation process.

### **Note**

It is recommended to use the default folder for the installation of Matrix Software.

8. **Key type**, select **Network** and **Hardware** or **Software** if you have access to a network key.
9. **Address key network**, enter the IP address or name of the server, where the network key is attached or runs.

### **Note**

In case of a hardware key also fill in the serial number of the hardware key, which appears on the key itself. If not, please contact the helpdesk Matrix.

10. The installation can now be started. Click **Install**.

### **Note**

The installation procedure can be aborted at any time by clicking **Cancel**.

11. The software is now successfully installed on your PC. Insert the included key, and your programs are ready.

### **Note**

When starting the software automatically checks your key. If it transpires that the key is not the latest license, you will first need to read the newer license. See Chapter Registration Network Key.

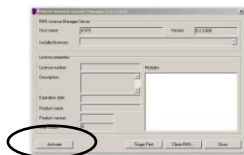
## REGISTRATION SOFTWARE LICENSE

1. You have **received** the **registration key** from Matrix Software by **email**. You can copy and paste the key in the activation window
2. **Log in** to the license server.
3. Put your security so that activation can take place via:  
Protocol: 5094  
Activation URL: [activation.matrix-software.nl](http://activation.matrix-software.nl)
4. **Activate** your new software key on the server using the **Network License Manager Application** (from CDROM or via website <http://www.matrix-software.com/nl/service/downloads/> )

- a. Click Manage Software License



- b. Click Activate



- c. Fill in the code and click Activate
- d. You get a message like



5. You're done with registration and you can work with the software

## REGISTRATION HARDWARE LICENSE

If the hardware key has expired or needs to be updated to a newer version, you can do to run as follows:

1. Physically **log in** to the console of the server
2. On de server start the **License Upgrade Tool** (from CDROM or via website <http://www.matrix-software.com/nl/service/downloads/> )
3. This will detect your network key
4. You can now **read the license file**, you have received via email.
5. The **License Upgrade Tool** will indicate that your license has been updated correctly.
6. Click **OK** and you're done with registration and you can work with the software.

### UPDATE SOFTWARE LICENSE

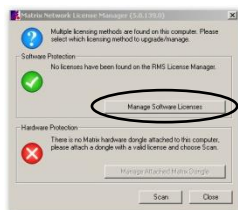
Have you purchased new modules, you will receive a new registration code via email. This code you can copy from your email and paste it in the activation dialog.

#### Note

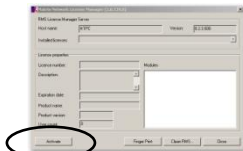
During activation, your PC needs a connecting with the Internet. Normally this is one time a year.

1. You **received** the **registration key** from Matrix Software by **email**. Take it there.
2. Log in to the license server.
3. Put your security so that activation can take place via:  
Protocol: 5094  
Activation URL: [activation.matrix-software.nl](http://activation.matrix-software.nl)
4. **Activate** your new registration key on the server using the **Network License Manager Application** (from CDROM or via website <http://www.matrix-software.com/nl/service/downloads/>)

- a. Click **Manage Software License**



- b. Click **Activate**



- c. **Fill in** the code and **Activate**
- d. You get a **message** like this



5. You're done with registration and you can work with the software.

#### Activation Failed?

Set your firewall so that security can be established via the activation protocol: 5094 to the url: [activation.matrix-software.nl](http://activation.matrix-software.nl)

#### Hardware Change

If one of the hardware components are changed then the Matrix application could no longer starts. You should then contact the Support division of Matrix Software

#### New Installation of Operating System

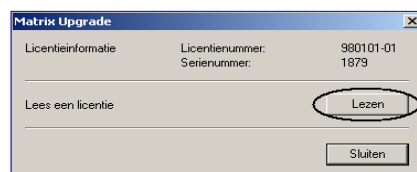
If the operating system is reinstalled and the system gets the same computer name, then the original registration code can be used to reactivate.

### UPDATE HARDWARE LICENSE

When new modules purchased, you receive a new registration code will be sent via email, which we recommend to save somewhere on your hard disk.

#### Through **Matrix Frame / Frame Matrix Toolbox**

1. **Start** Matrix Frame / Frame Matrix Toolbox.
2. After selecting project type, click on tab **Extra** and select **License info**.
3. Click in the appearing dialogue **Dongle info / License**
4. If you click **Upgrade**, the following dialog appears



5. Click **Read**.
6. The computer will ask you to enter a disk. By clicking **Cancel** you get to a window where you can browse to the folder where the license files that you received via email, saved.
7. **Select** the license file by clicking and then click **Open**.
8. Your registration for the software will now be read. If this is successful you will receive a **message**;
9. Click **OK** and **Close**
10. The program is now ready for your new license to operate.

#### Through **Matrix Tools / MatrixGeo**

1. **Start** Matrix Tools / MatrixGeo
2. Go to File and choose **Update License Key**
3. If you click **Upgrade**, you will see the screen below
4. Click **Read**.
5. Your computer will ask you to enter a disk. By clicking **Cancel** you get to a window where you browse to the folder where the license files that you received via email has stored.
6. **Select the license** file by clicking and then click **Open**.
7. Your registration for the software will now be read. If this is successful you will receive a message;
8. Click **OK**.
9. The program is now ready for your new license to operate.