

INSTALLATION GUIDE

STRUCTURAL ANALYSIS SOFTWARE

- ✓ MatrixFrame
- ✓ MatrixTools

SYSTEM REQUIREMENTS

- Microsoft Windows 7 / 8 / 10 (32 / 64bits)
- Intel Core i5 (or equal) processor
- 2 GB RAM
- 1 GB free writing space
- Screen resolution 1024x768
- Internet (when using softkey) / USB (when not using softkey)

INDEX

SINGLE USER LICENSE

INSTALL ANALYSIS SOFTWARE	3
REGISTRATION SOFTWARE LICENSE.....	4
REGISTRATION HARDWARE LICENSE	4
UPDATE SOFTWARE LICENSE	5
UPDATE HARDWARE LICENSE	5

NETWORK USER LICENSE

INSTALL DRIVER ON SERVER (SOFTWARE LICENSE)	6
INSTALL DRIVER ON SERVER (HARDWARE LICENSE)	6
INSTALL ANALYSIS SOFTWARE	7
REGISTRATION HARDWARE LICENSE	8
UPDATE SOFTWARE LICENSE	9
UPDATE HARDWARE LICENSE	9

INSTALL ANALYSIS SOFTWARE

Note

Make sure you are logged on as **administrator** of the computer when you install the software. If necessary, contact your system administrator.

Perform the following steps to successfully install the software on your computer:

1. Are you in possession of a hardware key (USB) from Matrix, remove them first before proceeding with installing analysis software on your PC.
2. Download and install with enough privileges the last version of MatrixFrame:
<http://www.matrix-software.com/nl/ingenieurs/downloads/matrixframe/index.html>
3. The installation procedure begins with a welcome screen. The installation is now being prepared. This may take some time. Click **Next** to move to the next screen.
4. **License**, read the license agreement carefully. Make a right choice. If you do not agree, the installation stops. Do you agree then click **Next** to move to the next screen.
5. Install with **standard** settings

Note

The installation procedure can be aborted at any time by clicking **Cancel**.

Note

When starting, the software will automatically check your valid key or activation. If it appears that the key is not the latest or the license or has expired, you will first need to read the newer license. See next page.

If you are in possession of a **hardware key** and this is **expired** or has to be activated, follow the procedure on the next page.

If you are in possession of a **hardware key** and it is **up-to-date**, connect it to your workstation and your programs are ready for use.

If you are in possession a **software key** and there is no activated earlier version for this kind of software from Matrix software on your system, follow the procedure on the next page.

If you are in possession a **software key** and there is an older version of the accounting software activated by Matrix Software on your computer, then the new version is ready for use.

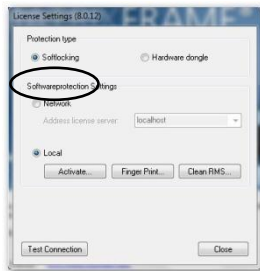
REGISTRATION SOFTWARE LICENSE

Before you can register the software, your PC must be connected to the Internet. Only during the activation of your license your workstation needs an Internet connection.

1. Start **MatrixFrame / MatrixTools**
Without proper registration, the program will start with the screen:



2. Choose in the dialog for **Settings**
3. Choose from the resulting dialog **Software and Local**



4. Click the button **Activate**
5. From the resulting dialog enter the code that you received via email or post and then click the button **Activate**.
6. At that point, your computer connects to the Internet with the Matrix Server, and it will recognize your license.
7. A screen will appear that your key is **successfully activated**.
8. Click **OK** and you are ready with registration and you can work.

Activation Error?

Activate not before the activation code was generated by Matrix Software at GMT+1. Set your firewall so that security can be established via the activation protocol: 5094 to the URL: activation.matrix-software.nl

Hardware Change & changing Operating System

If one of the hardware components are changed then the Matrix application could no longer starts. You should then contact the Support division of Matrix Software. If the operating system is reinstalled and the system gets the same computer name, then the original registration code can be used to reactivate.

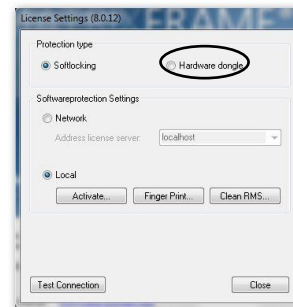
REGISTRATION HARDWARE LICENSE

Before you can register the software, you need to confirm that the USB hardware key is operational at your workstation.

1. Start **MatrixFrame / MatrixTools**
Without proper registration, the program will start with the screen;

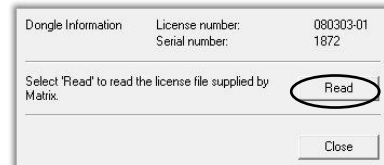


Choose for **Settings**

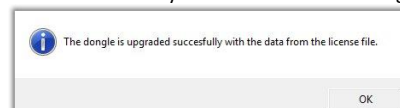


Choose for **"Hardware dongle"** and **"Local"** and click on button **Close**.

2. If you click **Upgrade** you will see the screen below;



3. Click **Read**.
4. The computer will ask you to enter a disk. By clicking **Cancel** you get to a window where you can browse to the folder where the license files that you received via email, has stored.
5. Select the license file by clicking and then click **Open**.
6. Your registration for the software will now be read. If this is successful you will receive the message



7. Click **OK**.
8. Then click **OK** in the boot screen (see point 1).
9. The program is now ready for operate with your new license.

UPDATE SOFTWARE LICENSE

Have you purchased new modules, you will receive a new registration code via email.

Note

During activation, your PC needs a connecting with the Internet. Normally one time a year

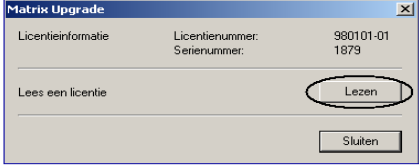
Through MatrixFrame / MatrixTools

1. Start **MatrixFrame / MatrixTools**.
2. After selecting project type, click on tab **Customise** and select **License info**
3. Click the following dialogue **Activation**; If activate button is not present, (only update button), press choose Settings. In that dialog set protection on software and local. Click Activate.
4. **Enter / Paste the code** you received by email.
5. The computer will now connect through Internet with the license server by Matrix Software
6. You will be **notified** if this is successful. Click **OK** and **Close**
7. The program is now ready for use.

UPDATE HARDWARE LICENSE

When new modules purchased, you receive a new registration code will be sent via email. Save this file local on your disk.. This is your first time somewhere on the hard disk of your computer to save.

Through MatrixFrame / MatrixTools

1. Start **MatrixFrame / MatrixTools**
 2. After selecting project type, click on tab **Customise** and click on **License info**
 3. Click the following dialogue **Upgrade**; If upgrade button is not present, (only activate button), press choose Settings. In that dialog set protection on Hardware dongle and local. Click Upgrade.
 4. If you click **Upgrade**, the following dialog appears
- 
5. Click **Read**
 6. The computer will ask you to enter a disk. By clicking **Cancel** you get to a window where you can browse to the folder where the license files that you received via email, saved
 7. **Select** the license file by clicking and then click **Open**
 8. Your registration for the software will now be read. If this is successful you will receive a **message**
 9. Click **OK** and **Close**
 10. The program is now ready for use.

INSTALL DRIVER ON SERVER (SOFTWARE LICENSE)

1. Install the **Sentinel RMS License Manager installer** on a server in the network. (Separate installation)
Download this file from the website:
<http://www.matrix-software.com/nl/service/downloads/>

1. Select complete setup



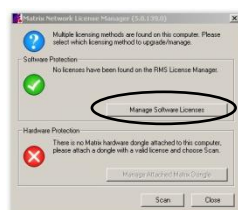
2. Select automatic protection



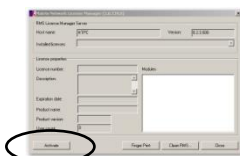
3. Select for Next and Finish

2. You received a registration key via email. You can copy this key and paste it in the activation window (see step 4).
3. Activate the license on the server through the **Matrix Network License Manager Utility** (From CD or downloadable from the website:
<http://www.matrix-software.com/nl/service/downloads/>)

1. Click Manage Software License



2. Click Activate



3. Fill in the code and choose Activate

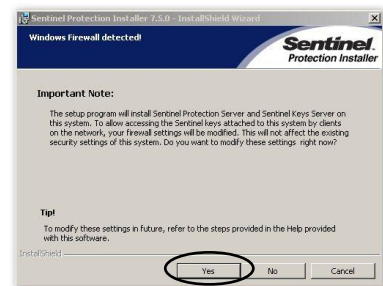
INSTALL DRIVER ON SERVER (HARDWARE LICENSE)

1. Install the **Sentinel Protection Installer (Networking)** on a server in the network.
Download this file from the website:
<http://www.matrix-software.com/nl/service/downloads/>

1. Choose complete installation



2. Choose Yes



3. Continue the installation until it's finished.

2. Insert the hardware key (USB) on the server
3. From a web browser on a client in the network, the key must be reachable when you start a web browser and put in the address bar the IP number with 7002 protocol.
4. If the key is properly installed the client's web browser loaded to a page with information concerning the key.

Activation Error?

Activate not before the activation code was generated by Matrix Software at GMT + I. Set your firewall so that security can be established via the activation protocol: 5094 to the URL: activation.matrix-software.nl

From workstation client the server must be reachable by webbrowser on port 6002: [http://\(IP_or_DNS\):6002](http://(IP_or_DNS):6002)

Hardware Change & changing Operating System

If one of the hardware components are changed then the Matrix application could no longer starts. You should then contact the Support division of Matrix Software. If the operating system is reinstalled and the system gets the same computer name, then the original registration code can be used to reactivate.

INSTALL ANALYSIS SOFTWARE

Note

Make sure you are logged on as **administrator** of the computer when you install the software. If necessary, contact your system administrator.

Note

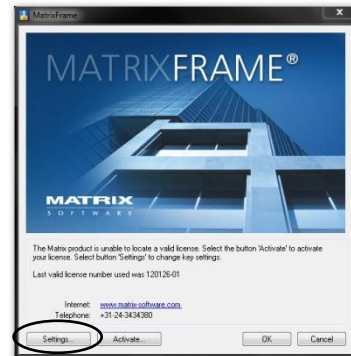
If you have a network key you have to install first the driversoftware on the server. Go to page 6 of this document,

Perform the following steps to successfully install the software on your computer:

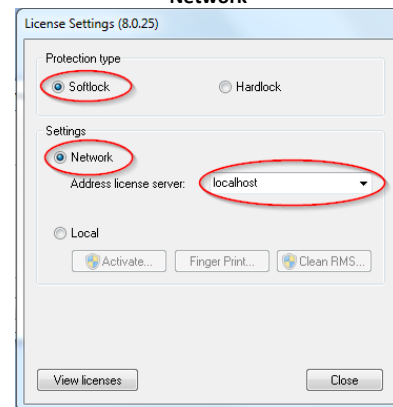
Are you in possession of a hardware key (USB) from Matrix, remove them first before proceeding with installing analysis software on your PC.

1. Download and install with enough privileges the last version of MatrixFrame:
<http://www.matrix-software.com/nl/ingenieurs/downloads/matrixframe/index.html>
2. The installation procedure begins with a welcome screen. The installation is now being prepared. This may take some time. Click **Next** to move to the next screen.
3. **License**, read the license agreement carefully. Make a right choice. If you do not agree, the installation stops. Do you agree then click **Next** to move to the next screen.
4. Install with **standard** settings

- a) Start **MatrixFrame / MatrixTools**
Without proper registration, the program will start with the next screen:



- b) Choose from the resulting dialog **Software** and **Network**

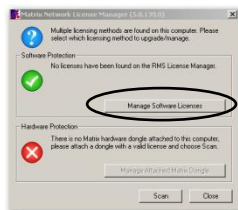


- c) Set the address license server (ip / dns)

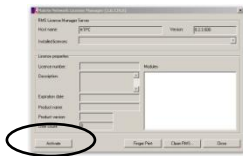
REGISTRATION SOFTWARE LICENSE

1. You have **received** the **registration key** from Matrix Software by **email**. You can copy and paste the key in the activation window
2. **Log in** to the license server.
4. **Activate** your new software key on the server using the **Network License Manager Application**
Download from:
<http://www.matrix-software.com/nl/service/downloads>

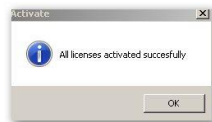
- a. Click Manage Software License



- b. Click Activate



- c. Fill in the code and click Activate
- d. You get a message like



5. You're done with registration and you can work with the software

REGISTRATION HARDWARE LICENSE

If the hardware key has expired or needs to be updated to a newer version, you can do to run as follows:

1. Physically **log in** to the console of the server
2. On de server start the **License Upgrade Tool**
Download from:
<http://www.matrix-software.com/nl/service/downloads/>
3. This will detect your network key
4. You can now **read the license file**, you have received via email.
5. The **License Upgrade Tool** will indicate that your license has been updated correctly.
6. Click **OK** and you're done with registration and you can work with the software.

Activation Error?

Activate not before the activation code was generated by Matrix Software at GMT+1. Set your firewall so that security can be established via the activation protocol: 5094 to the URL:
activation.matrix-software.nl

Hardware Change & changing Operating System

If one of the hardware components are changed then the Matrix application could no longer starts. You should then contact the Support division of Matrix Software. If the operating system is reinstalled and the system gets the same computer name, then the original registration code can be used to reactivate.

UPDATE SOFTWARE LICENSE

Have you purchased new modules, you will receive a new registration code via email. This code you can copy from your email and paste it in the activation dialog.

Note

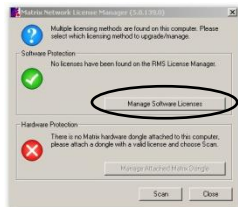
During activation, your PC needs a connecting with the Internet. Normally this is one time a year.

1. You **received** the **registration key** from Matrix Software by **email**. Take it there.
2. Log in to the license server.
3. **Activate** your new registration key on the server using the **Network License Manager Application**

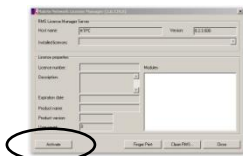
Download from:

<http://www.matrix-software.com/nl/service/downloads/>

- a. Click **Manage Software License**



- b. Click **Activate**



- c. **Fill in** the code and **Activate**

- d. You get a **message** like this



4. You're done with registration and you can work with the software.

Activation Error?

Activate not before the activation code was generated by Matrix Software at GMT+1. Set your firewall so that security can be established via the activation protocol: 5094 to the URL: activation.matrix-software.nl

Hardware Change & changing Operating System

If one of the hardware components are changed then the Matrix application could no longer starts. You should then contact the Support division of Matrix Software. If the operating system is reinstalled and the system gets the same computer name, then the original registration code can be used to reactivate.

UPDATE HARDWARE LICENSE

If you have purchased new modules will be sent a new registration code by email which you should save somewhere on the hard drive of your computer

1. **Save** the attached ***.mdu file local** (so it's reachable by your server)
2. **Log** physical (as admin) **on** your server (not by a remote desktop)
3. **Download** en **start** on the server the 'License Upgrade Tool' <http://www.matrix-software.com/downloads/licenseupgrader.exe>
4. It will recognize your network key
5. Now you can **read** the license file, which saved in step 1